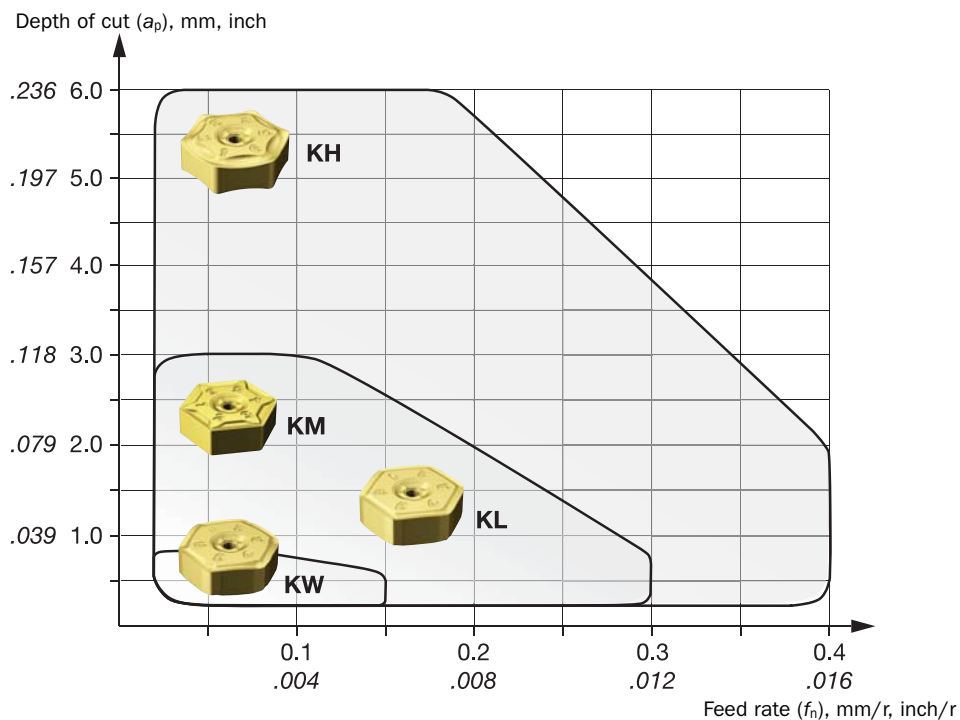


# S-60

Face mill 60° for cast iron with double sided hexagonal inserts

Depth of cut and feed range

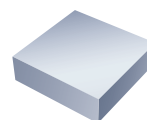
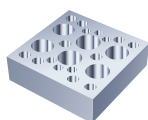
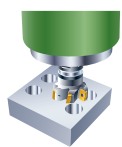


**Note:**

To achieve better surface finish KL geometries can be associated to R/L KW geometry. Wiper inserts must be placed on the insert seat marked with a spot.

## General information

Choose milling grade to your application



Intermittent machining ———— Cutting conditions ———— Continuous

Stability  
 Good  
 Medium  
 Bad

1010	1010			
1020	1020	K20W	K20M	K20D/3220
1030	1030			4220
S30T			4230	3040
1040				
		2040	4240	
		S40T		

Small ————  $a_e$  ———— Large

Wet ———— Application ———— Dry

